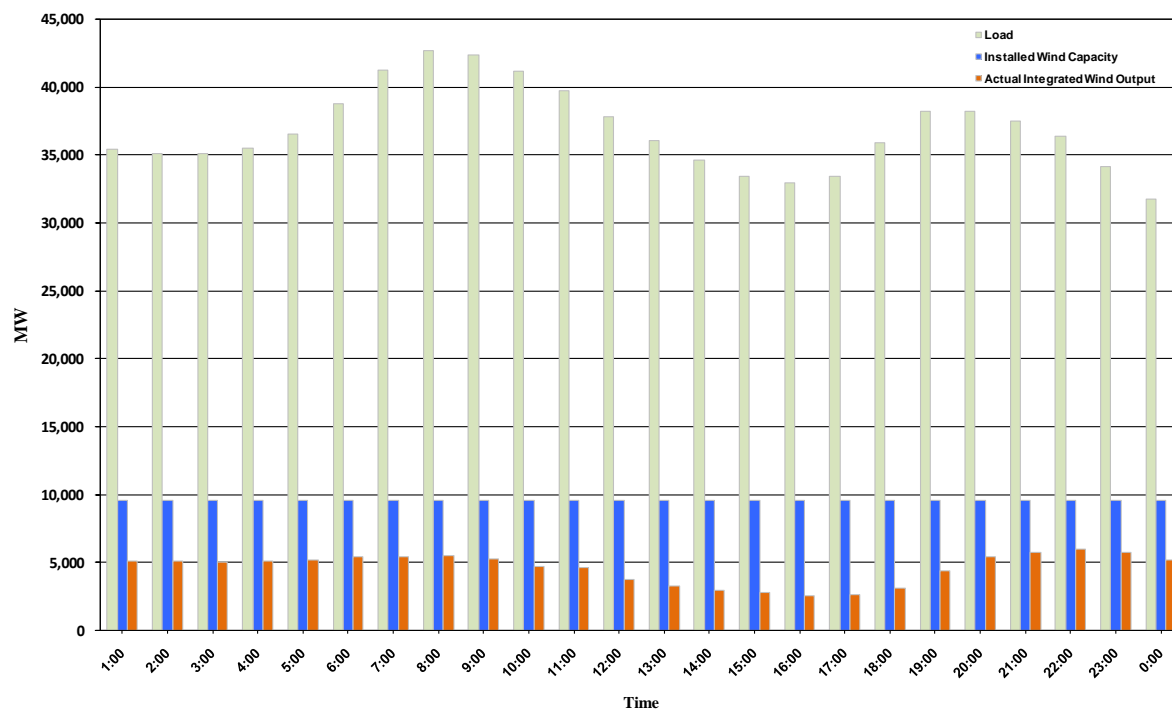




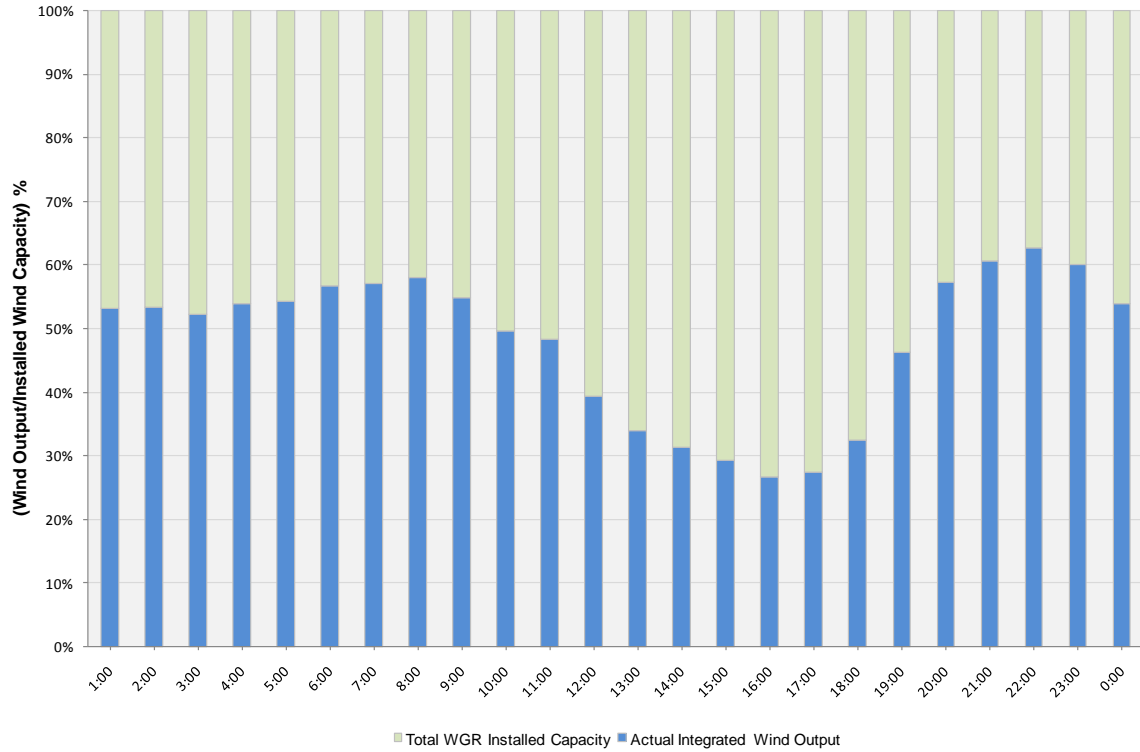
ERCOT Grid Operations Wind Integration Report: 12/27/10

Peak Load	42,662 MW
Load Peak Hour	08
Wind Record 12/11/10	7,227 MW
Max Wind Value	6,235 MW
Wind Peak Hour	21:17:32
Wind Integration %	16.97

Hourly Average Actual Load vs. Actual Wind Output
12-27-2010



Actual Wind Output as a Percentage of the Total Installed Wind Capacity
12-27-2010



Actual Wind Output as a Percentage of the ERCOT Load
12-27-2010

